



German WindEnergy
Association (BWE)

Wind energy in Germany

Claudia Grotz
German Wind Energy Association (BWE)
EWEC 2010
Warsaw
April 2009

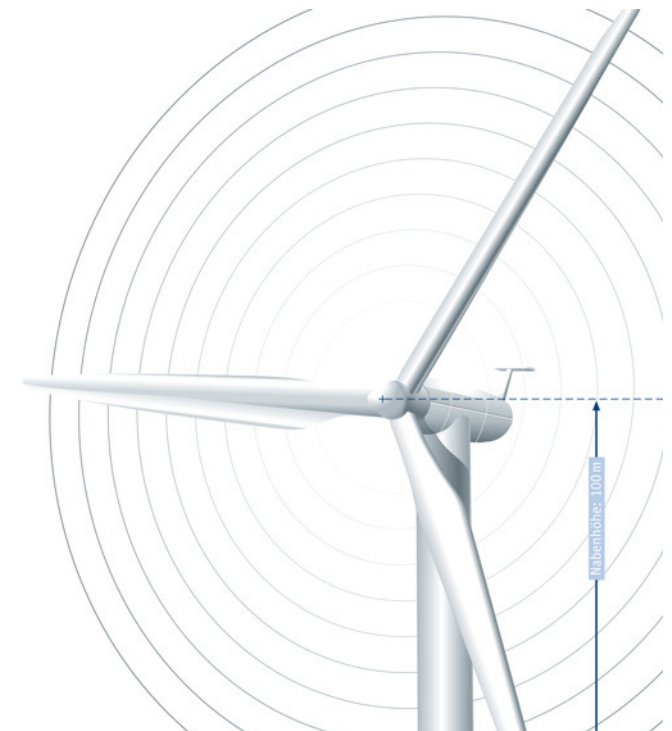
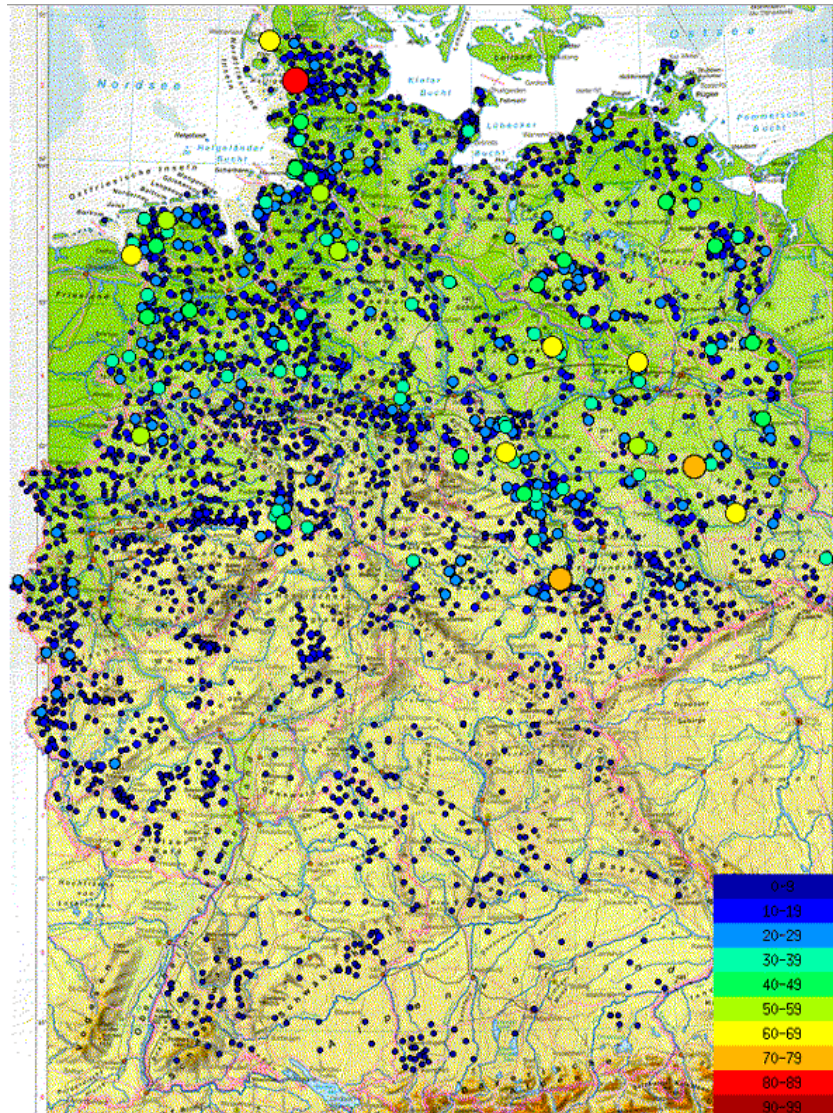


www.wind-energie.de

Statistical data wind energy end 2009

| | 2009 | 2008 |
|--|------------------------------|-----------------------|
| Total installed capacity | 25,777 Megawatt | 23,903 Megawatt |
| Newly installed capacity | 1,917 Megawatt | 1,665 Megawatt |
| Number of turbines | 21,164 | 20,301 |
| New turbines in one year | 952 | 866 |
| Electricity generation from wind power Share in gross electricity consumption | 38.00 bn kWh 6.4 % | 40.43 bn kWh 6.6 % |
| Potential annual energy yield Share in gross electricity consumption | 46.76 bn kWh 7.5 % | 43.01 bn kWh 7.0 % |
| CO2 emissions avoided | 32.10 m tons | 34.61 m tons |

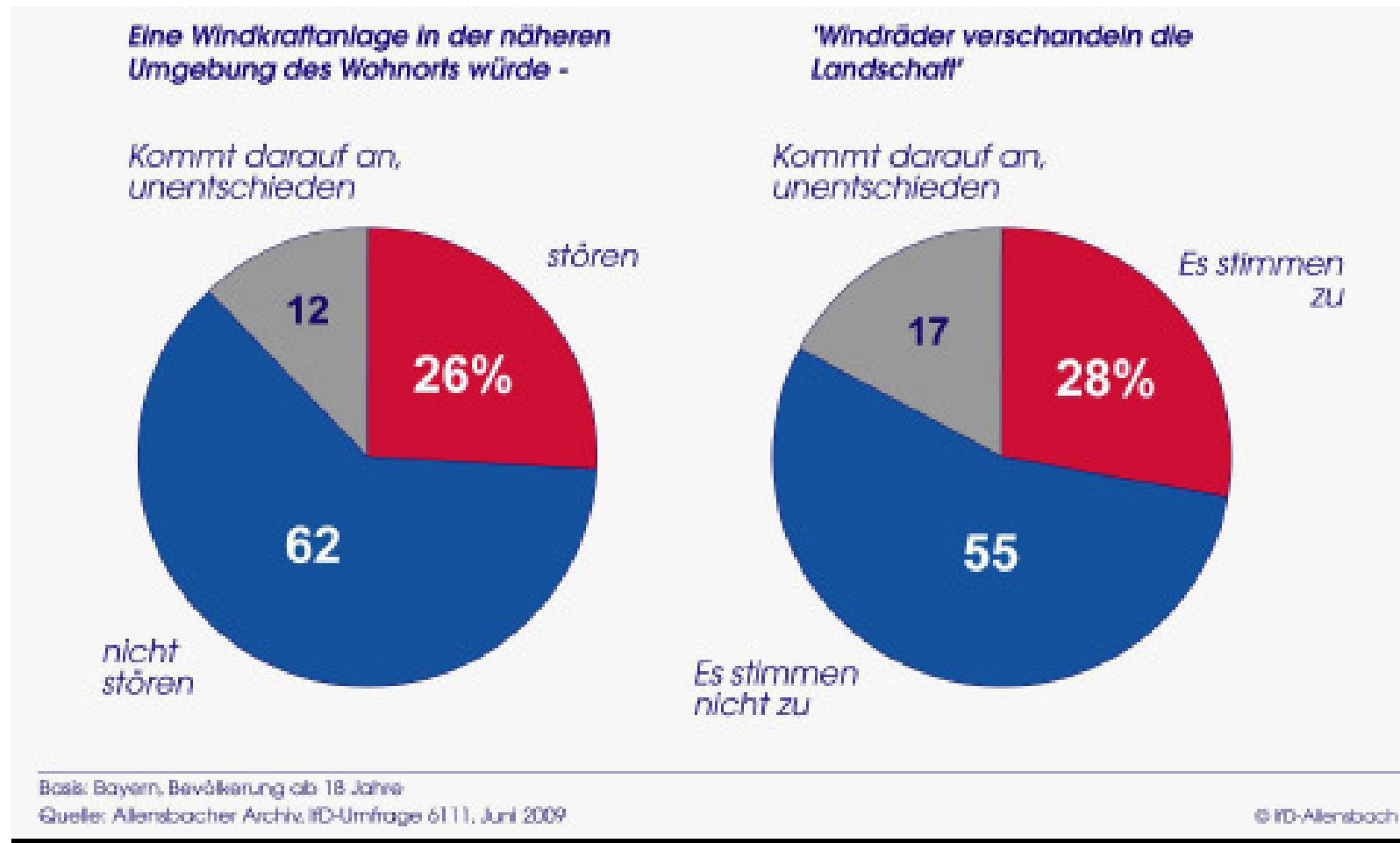
Installed wind capacity per region in Germany



Acceptance is driven by...

- High general environmental consciousness and support for renewable energies
- Employment: currently about 100,000 jobs,
37,000 in turbine manufacturing and supply industry
- Business tax for local authorities
- Community wind farms - financial involvement of local population
- Technical fascination

Surveys: acceptance of wind turbines, Bavaria 2009



Community wind farms – some good experience made

Planning: local participation in planning

- Land owners co-operation during planning phase
- Various land lease models

Financing: local participation first

- Participation offers to locals in first round
- Low cost operation – no special cost on top of shares in operating community

Land lease models...

...e.g. in Schleswig-Holstein where 60-70 % of projects are community projects

Income from leasing also for neighbouring areas
→ bigger areal is part of land lease contracts

- According to acoustic noise emissions – e.g. within 45 decibel line
- According to distance from settlement (sight)

Examples for land lease shares

- 50 - 60 % share for area with wind turbines
- 30 % for access roads
- 10 - 20 % for neighboring land



German WindEnergy
Association (BWE)

Contact:

Claudia Grotz

German WindEnergy Association (BWE)

Marienstraße 19-20

D - 10117 Berlin

Tel.: +49 / (0)30 - 28482-109

Fax: +49 / (0)30 - 28482-107

mailto: c.grotz@wind-energie.de



www.wind-energie.de